

2023

Annual Report



Contents

About WiRē 1

Introduction to the WiRē mission
and WiRē Approach

Partners and Projects 8

Overview of WiRē projects

2023 in Review 13

Projects, publications, awards,
and outreach

Financials 27

Revenue and funding

People 28

WiRē team members



Rapid assessment training with Nikiski Fire Department in May 2023.

Our Mission

The mission of the WiRē Center is to support evidence-based community wildfire education efforts so that communities can live with wildfire. Specifically, the WiRē Center provides personalized expertise and support to collect, interpret, and use paired parcel-level wildfire risk and social data. The WiRē Approach enables partners to effectively allocate resources and engage with residents. Leveraging lessons learned across projects, the WiRē Center pursues scientific approaches to inform conversations and decisions about wildfire adaptation.

Our Vision

Communities can live with wildfire.

WiRē's Philosophy



Chiara Forrester, WiRē's Wildfire Mitigation Specialist, measures 150 ft of distance as part of a rapid assessment training with Routt County partners in September 2023.

The WiRē approach is premised on the underlying philosophy that **wildfire practitioners can develop better programs if they participate in the data collection process and share the results themselves, with their partners and communities.**

Local practitioners collect the data and use the results to tailor their wildfire risk education programs.

WiRē provides support and tools to streamline and assure the data collection efforts conform to best scientific practices, as well as expertise to summarize and analyze the social data.

The WiRē Approach

Our approach (the WiRē Approach) is a systematic process that includes two data collection efforts. Together, these data help us provide evidence-based strategies to help make our communities more resilient to wildfire.



Rapid wildfire risk assessments based on attributes related to building materials, vegetation near the home, background fuels and topography, as well as access for the fire department to the parcel.

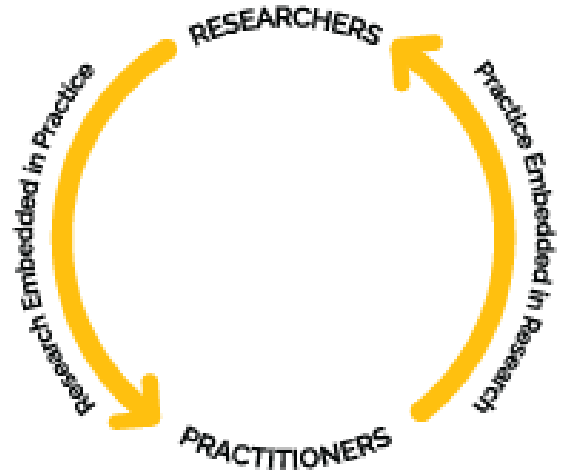


Household surveys sent to the owners of the assessed parcels to investigate perceptions of wildfire risk, risk mitigation behaviors, outreach preferences, and responses to incentives to mitigate risk.

Distinguishing Characteristics of the WiRē Approach



Patty Champ, WiRē and USFS, discusses project findings with Patrick Haggerty, Cascadia Conservation District during a visit to Chelan County in May 2023.



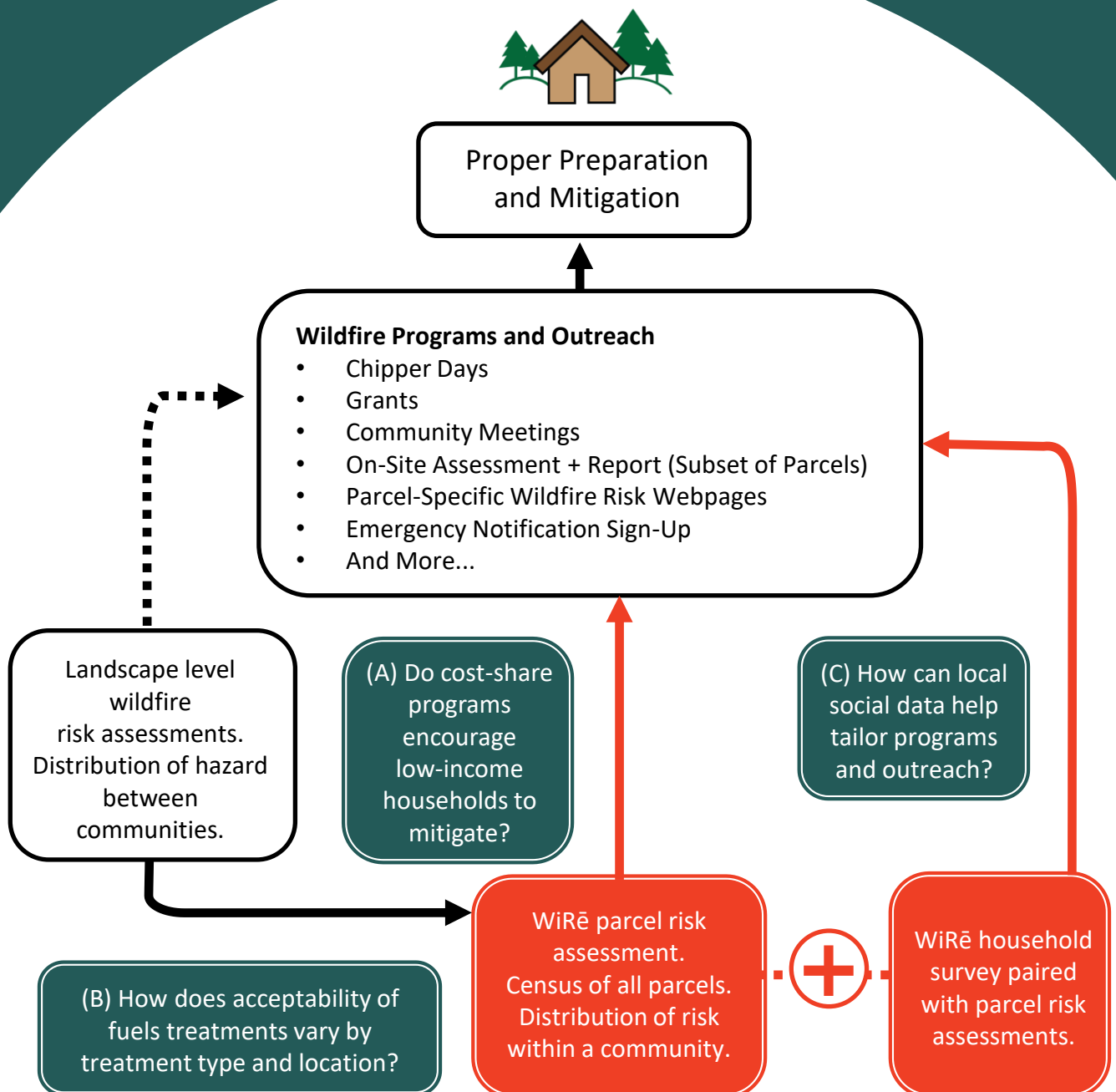
Our work is based on a **long-term, research-practitioner collaboration** where researchers and practitioners contribute equally to the research agenda, methods, and questions.

Through this iterative process the approach continues to evolve and adapt while maintaining a central focus on **creating actionable tools and information** for effective science-based wildfire education programs.

The systematic WiRē approach focuses on all private land parcels with a primary residential structure within a community. The **holistic community approach** is a notable departure from opportunistic wildfire education programs that focus substantial effort on a few community residents.

Research Embedded in Practice

WiRē data support efforts to increase homeowner wildfire mitigation and preparedness and to address critical research questions about wildfire risk. The red boxes show WiRē data, and the green-blue boxes show research questions recently explored by WiRē.



Stages of a WiRē Project



We select a study area with our partner



Partner does rapid wildfire risk assessments of each parcel in the study area

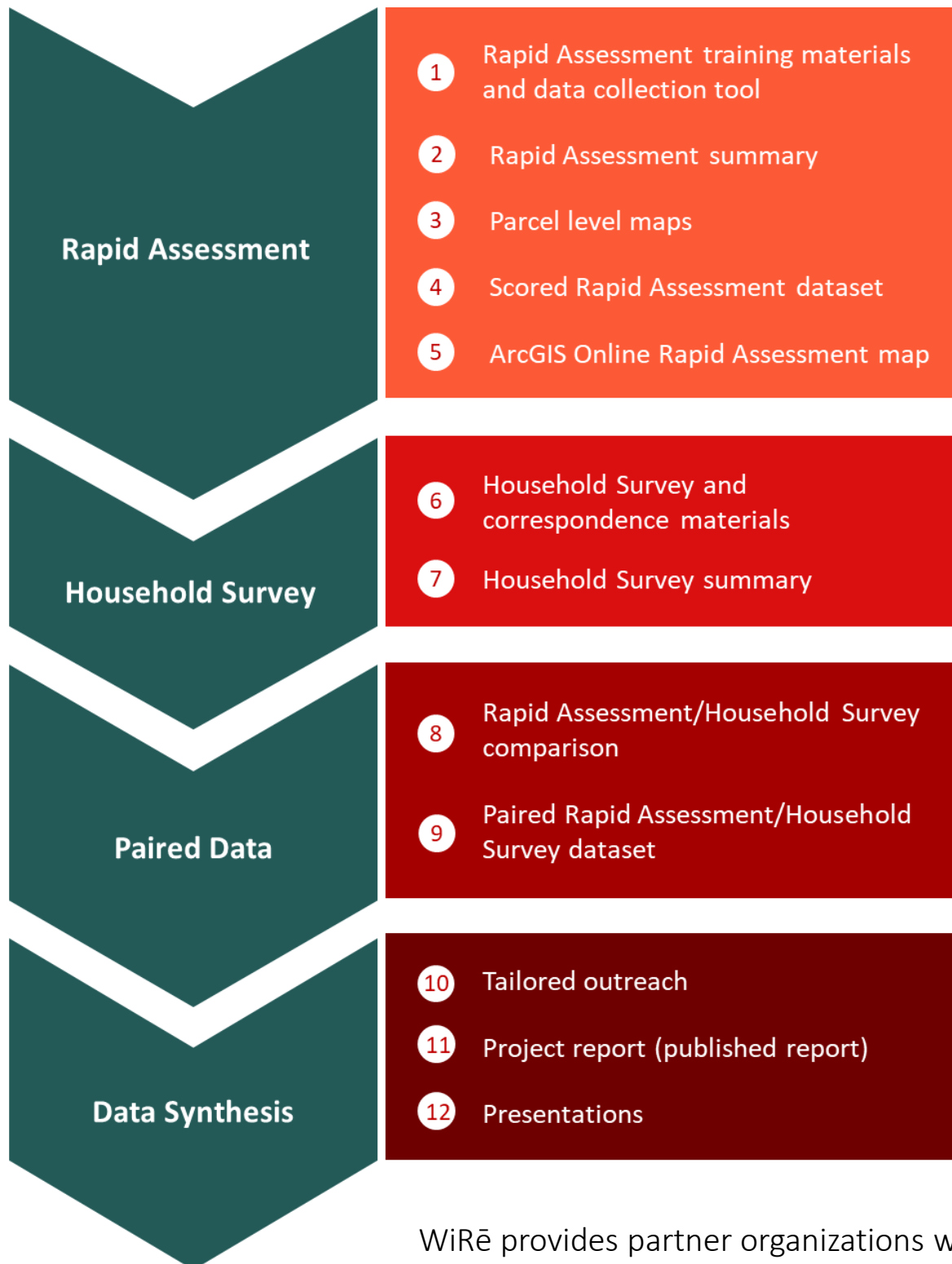


A survey is mailed to all households in the study area



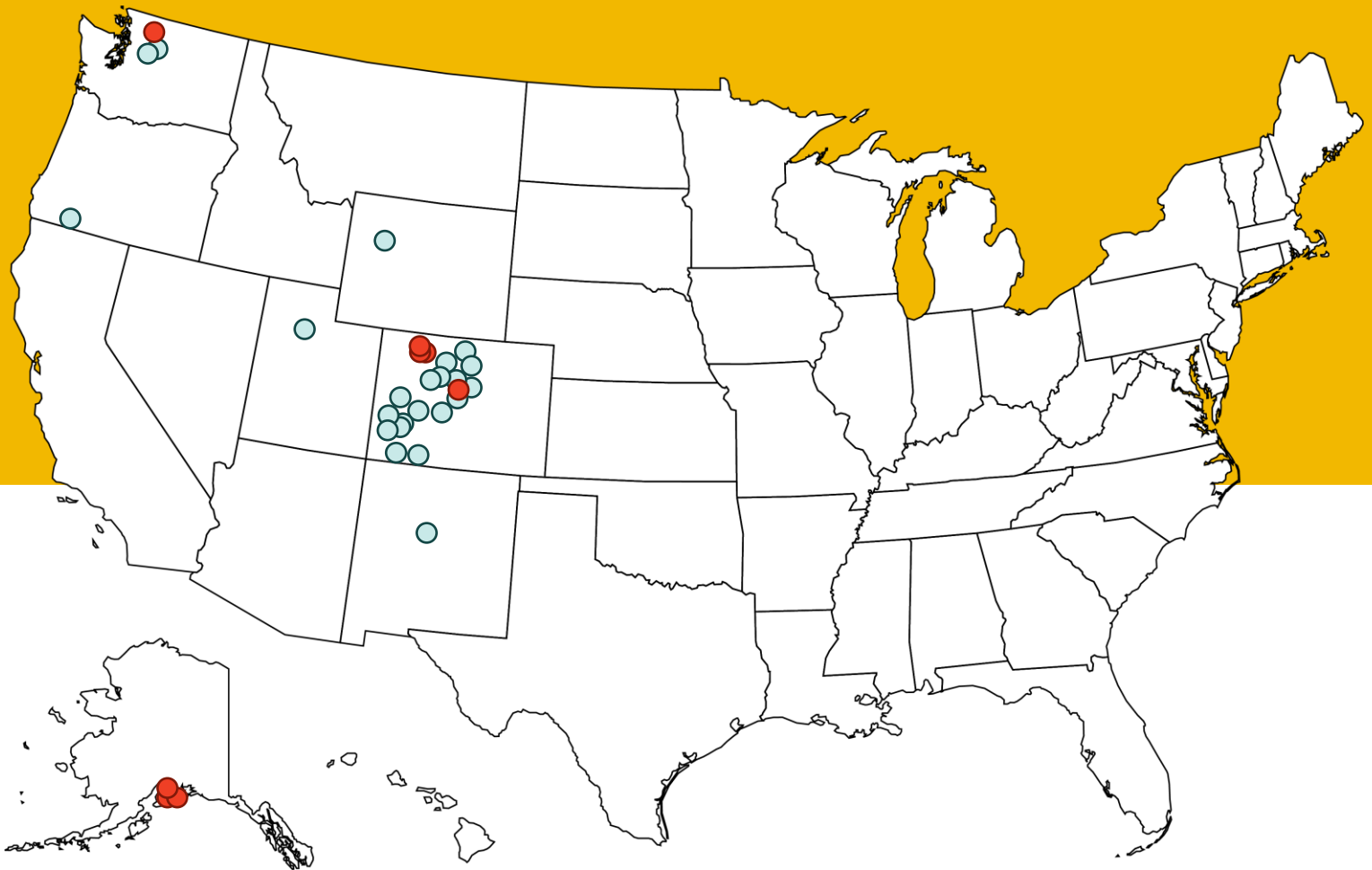
Partner adapts approach and programs

Data Products



WiRē provides partner organizations with a suite of data products to access and understand their data.

WiRē Project Locations



- Initiated in 2023
- Initiated before 2023

WiRē Partners & Projects

Year Started	Location	Main Partner(s)	Affiliated Partners
2023	Nikiski, Kenai Peninsula, AK	Kenai Peninsula Borough Office of Emergency Management	Nikiski Fire Department
2023	Cooper Landing, Kenai Peninsula, AK	Kenai Peninsula Borough Office of Emergency Management	Cooper Landing Emergency Services
2023	Funny River, Kenai Peninsula, AK	Kenai Peninsula Borough Office of Emergency Management	Kenai Peninsula Borough Central Emergency Services
2023	North Routt, Routt County, CO	Routt County Wildfire Mitigation Council	North Routt Fire Protection District
2023	West Steamboat Springs, Routt County, CO	Routt County Wildfire Mitigation Council	Steamboat Springs Fire Protection District
2023	Stagecoach, Routt County, CO	Routt County Wildfire Mitigation Council	Oak Creek Fire Protection District
2022	Mount Shavano & Mount Antero Front, Chaffee County, CO	Colorado State Forest Service, Salida Field Office	Arkansas River Watershed Coalition
2022	West Leadville, Lake County, CO	Colorado State Forest Service, Salida Field Office	Leadville/Lake County Fire Department, Arkansas River Watershed Coalition
2022	Select communities in Estes Valley, Larimer County, CO	Estes Valley Fire Protection District	Estes Valley Watershed Coalition

WiRē Partners & Projects

Year Started	Location	Main Partner(s)	Affiliated Partners
2021	Montrose Fire Protection District, Ouray and Montrose Counties, CO	West Region Wildfire Council	
2021	West Vail, Eagle County, CO	Vail Fire & Emergency Services	
2021	Genesee Fire Protection District, Jefferson County, CO	Genesee Fire Rescue	
2021	Lake Wenatchee area, Chelan County, WA	Lake Wenatchee Fire & Rescue	Cascadia Conservation District
2021	Chumstick Corridor, Chelan County, WA	Chelan County Fire District #3	Cascadia Conservation District
2021	Stemilt Basin, Chelan County, WA	Wenatchee Valley Fire Department (Formerly Chelan County Fire District #1)	Cascadia Conservation District
2020	Select communities within City of Santa Fe, Santa Fe County, NM	City of Santa Fe Fire Department	
2020	Emigration Canyon, Salt Lake County, UT	Utah's Forestry, Fire and State Lands	Emigration Canyon Metro Township; Unified Fire Authority
2020	Select communities, Teton County, WY	Teton Area Wildfire Protection Coalition	Jackson Hole Fire/EMS
2019	Chalk Creek Drainage, Chaffee County, CO	Colorado State Forest Service, Salida Field Office	Chaffee County Fire Protection District

WiRē Partners & Projects

Year Started	Location	Main Partner(s)	Affiliated Partners
2019	Select communities, Grand County, CO	Grand County Wildfire Council	Hot Sulphur Springs, Grand Lake, Grand, Kremmling, and East Grand Fire Protection Districts
2019	Burland Ranchettes area, Park County, CO	Platte Canyon Fire Protection District	Fire Adapted Bailey; Burland Ranchettes HOA
2019	Select neighborhoods in Ashland, Jackson County, OR	Ashland Fire & Rescue	
2018	Squilchuck Drainage, Chelan County, WA	Chelan County Fire District #1	
2017	Log Hill Mesa, Ouray County, CO	West Region Wildfire Council	Log Hill Mesa Fire Protection District
2015*	Norwood, San Miguel County, CO	West Region Wildfire Council	
2015	Montezuma County, CO	Wildfire Adapted Partnership**	Cortez, Dolores, Lewis-Arriola, and Mancos Fire Protection Districts
2015	La Plata County, CO	Wildfire Adapted Partnership**	Durango, Upper Pine, and Fort Lewis Mesa Fire Protection Districts
2013	Rainbow Estates, Gunnison County, CO	West Region Wildfire Council	

* These projects did not have the full WiRē paired data collection approach

** Formerly FireWise of Southwest Colorado

WiRē Partners & Projects

Year Started	Location	Main Partner(s)	Affiliated Partners
2013	Delta County, CO	West Region Wildfire Council	Cedaredge, Crawford, Hotchkiss, and Paonia Fire Protection Districts
2011	Log Hill Mesa, Ouray County, CO	West Region Wildfire Council	Log Hill Mesa Fire Protection District
2007/ 2010*	Larimer County, CO	Larimer County	Colorado State Forest Service, National Center for Atmospheric Research
2007/ 2010*	Boulder County, CO	Boulder County	Colorado State Forest Service, National Center for Atmospheric Research
2004*	Colorado Springs, El Paso County, CO	Colorado Springs Fire Department	

*** Formerly FireWise of Southwest Colorado*

2023 in Review

Partner of the Year



WiRē’s “Partner of the Year” award recognizes the outstanding efforts of our practitioner partners.



Photo credit: CSFS/Field Peterson

Adam Moore

This year, the WiRē Center recognizes Adam Moore as the Partner of the Year. We are deeply appreciative of Adam’s systematic engagement with the WiRē Center and his thoughtful endeavors to advance community wildfire adaptation.

Adam serves as the Supervisory Forester for the Colorado State Forest Service’s Alamosa Field Office. In his organizational leadership role Adam remains actively engaged with the communities within and beyond his office’s service area. Adam is an active participant in our quarterly Community of Practice meetings and has gone above and beyond expectations to advance a new

challenge for us – the consideration of undeveloped parcels being included in the WiRē Approach. Additionally, Adam is a big picture strategic thinker who has aligned our organizations’ missions through collaboration in several projects. Finally, Adam is a doer. While he was overseeing both the Colorado State Forest Service Alamosa and Salida Field Offices, he was able to leverage WiRē data to support on-the-ground project implementation in Chaffee County. We are thankful to the Colorado State Forest Service for supporting Adam’s efforts advancing WiRē’s reach throughout Colorado.

2023 in Review

Community of Practice



Panelists Dorie Dalton (Genesee Fire Rescue), Wilynn Formeller (Estes Valley Watershed Coalition), Aaron Johnson (West Region Wildfire Council), and Bill Trimarco (Wildfire Adapted Partnership) discuss wildfire mitigation and preparedness at the Colorado Wildland Fire Conference in April 2023.

Our Community of Practice (CoP) meetings are a space for WiRē partners to share technical information and personal perspectives on wildfire mitigation and preparedness, particularly as related to WiRē projects. WiRē held three virtual CoP meetings and one in-person workshop this year. In April 2023, WiRē also hosted a panel of CoP members at the Colorado Wildland Fire Conference.

2023 in Review

Community of Practice Workshop



In October 2023, the WiRē Center hosted an in-person Community of Practice Workshop in Denver, Colorado, bringing together 18 WiRē partners to discuss opportunities for WiRē to broaden the impact of our work.

“The workshop created the space for thoughtful conversation, networking, and the space to really think about how to better inform our work moving forward.”

– Kris King, Wildfire Risk Reduction Coordinator, Lake Wenatchee Fire and Rescue



WiRē Community of Practice attendees in October 2023.

2023 in Review

Partnerships

We formed 3 new partnerships in the Kenai Peninsula, Alaska—and piloted new data collection methods.



Meeting with Cooper Landing Emergency Services in May 2023.



Nikiski remote rapid assessment volunteer training in May 2023.

With support from an NSF grant, WiRē partnered with the Nikiski Fire Department, Cooper Landing Emergency Services, Central Emergency Services, and Kenai Peninsula Borough Office of Emergency Management to begin three WiRē projects in **three locations on the Kenai Peninsula of Alaska: Nikiski, Cooper Landing, and Funny River**. This spring, we traveled to Alaska to scope the projects and provide rapid assessment training.

Our Alaska partners had access to high quality aerial imagery of the study area and prompted us to consider the added value they may bring to risk assessments, especially for properties not visible from the road. We developed a methodology for using these data to conduct assessments and a training module. WiRē Center staff and two University of Colorado students conducted remote rapid risk assessments for all parcels in each of the three locations. These data will be used to understand the opportunities and limitations of remote vs. in-field observations for parcel-level risk assessments.

2023 in Review

Partnerships

We formed 3 new partnerships in Routt County, Colorado.



North Routt,
Stagecoach,
West Steamboat

WiRē partnered with the Routt County Wildfire Mitigation Council, North Routt Fire Protection District, Steamboat Springs Fire Protection District, and Oak Creek Fire Protection District to complete **three WiRē projects in Routt County, located in the communities of North Routt, West Steamboat Springs, and Stagecoach.**

In August, we traveled to Routt County to meet our partners and to identify study area communities together. In October, we visited again to train our Routt County partners on how to conduct WiRē Rapid Assessments. These rapid assessments are now almost completed, and we are working with our partners to develop the tailored household survey.

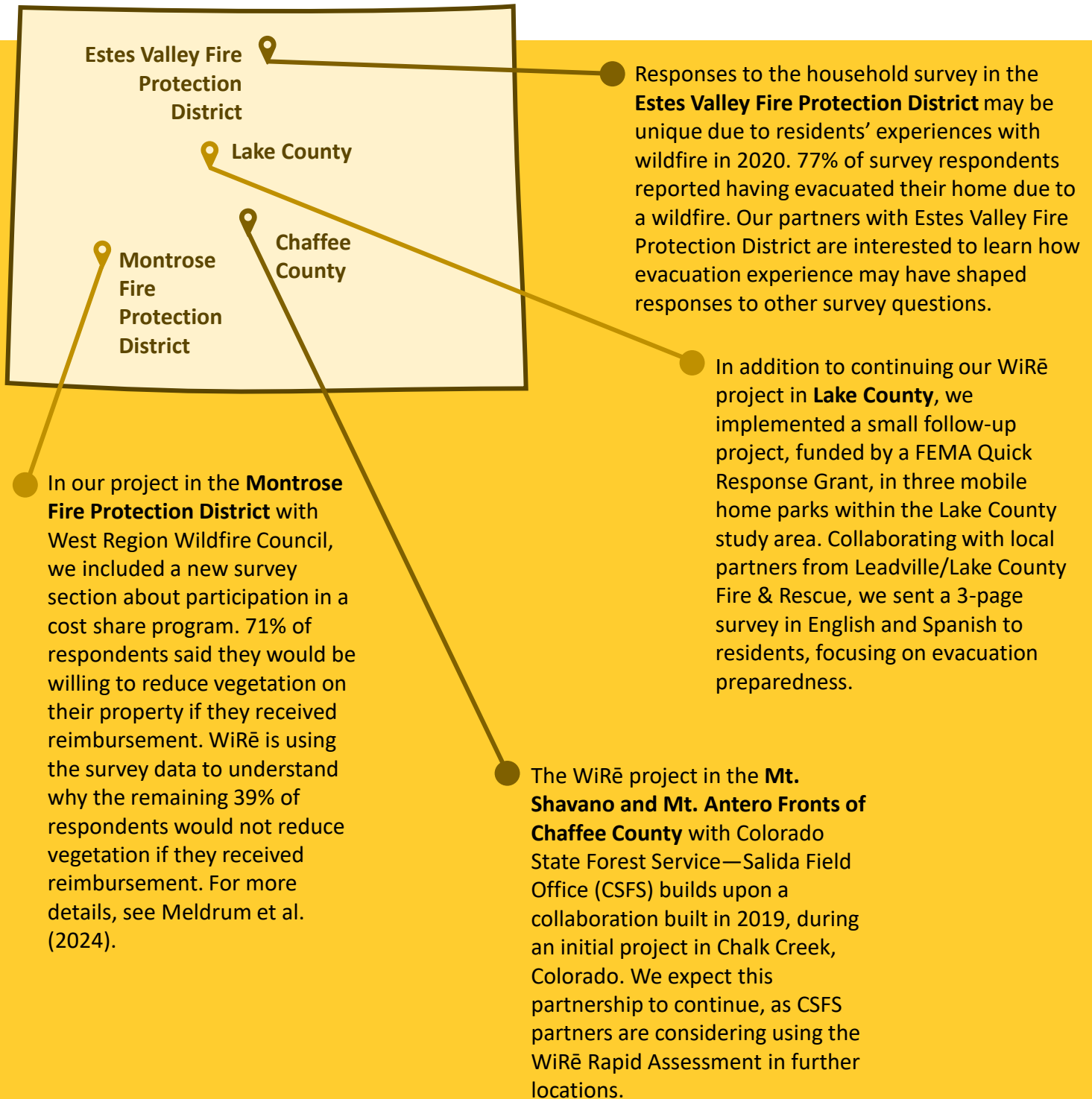


Rapid assessment training and first project meeting in August 2023.

2023 in Review

Partnerships

We continued ongoing partnerships across Colorado.



2023 in Review

Partnerships

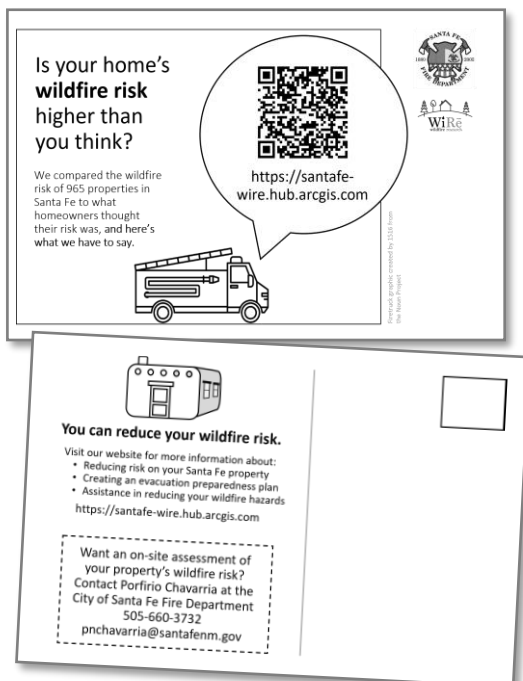
We shared project results in Santa Fe, New Mexico.



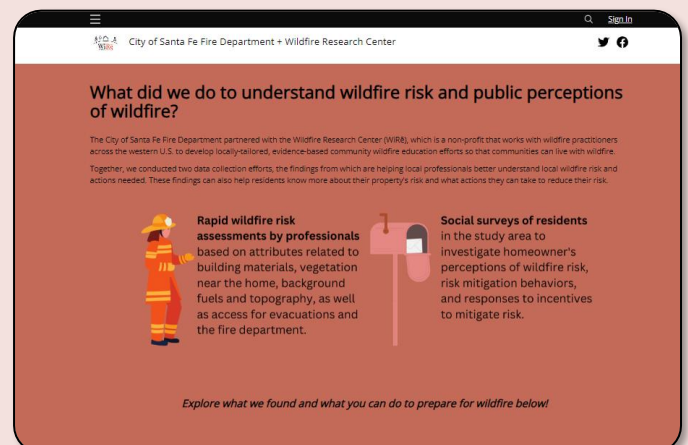
James Meldrum, WiRē and USGS, presents to the public in Santa Fe, NM in March 2023.

WiRē Center received funding from a Fire Adapted Communities New Mexico Microgrant for in-person meetings in **the City of Santa Fe** with the Greater Santa Fe Fireshed Coalition and members of the Fireshed Ambassadors Program. In-person meetings enable more meaningful conversations among our collaborators and thus deeper understanding of project findings. As a direct result of our meeting with the Fireshed Coalition, they began considering a Fireshed-wide WiRē project.

To communicate project results back to survey respondents, we developed a public-facing website highlighting actionable project findings and sent a postcard with a link to the website.



Postcard sent to residents in the Santa Fe, NM study area.



<https://santafe-wire.hub.arcgis.com/>

2023 in Review

Partnerships

We shared project results in Vail, Colorado.



West Vail



Patty Champ, USFS and WiRē, learns about defensible space from Paul Cada, Vail Fire and Emergency Services, in July 2023.

In July 2023, WiRē presented household survey results to Vail Fire and Emergency Services. Following the presentation, Paul Cada, Wildland Program Manager, gave WiRē a tour of **the West Vail study area**, seen through the eyes of a wildfire practitioner.

Instead of mailing the household surveys, as is the standard WiRē Approach, this round involved administration of the survey online, recruiting participants via postcards to homeowners, sandwich boards placed about town, and door hangers at entrances to multi-family dwellings. Unfortunately, this effort resulted in a response rate of 9%, the lowest our team has received for a WiRē project. To garner more responses, our partners opted to mail a follow-up paper household survey. The final response rate was 21%. Based on the outcome of this online survey effort, WiRē has concluded that mailed paper surveys continue to be our most effective survey method.



WiRē team members presented research findings to Vail Fire and Emergency Services on a beautiful spring day in July 2023.

2023 in Review

Partnerships

We shared project results in Chelan County, Washington.



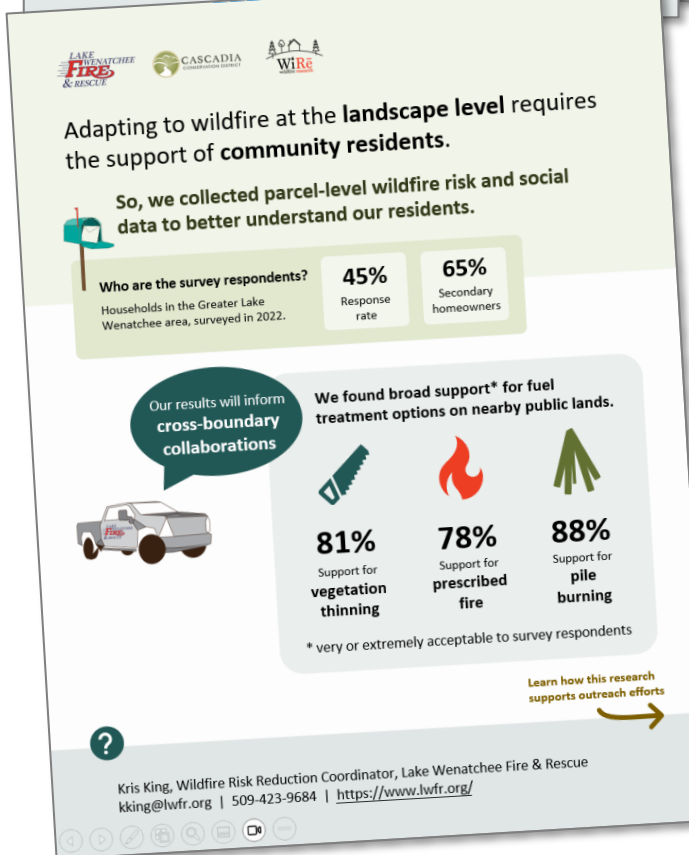
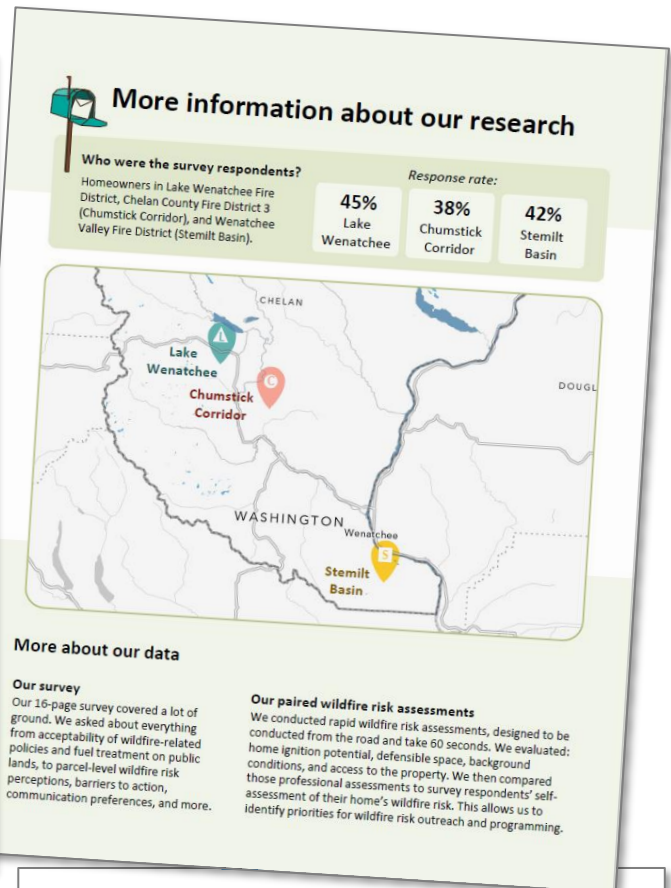
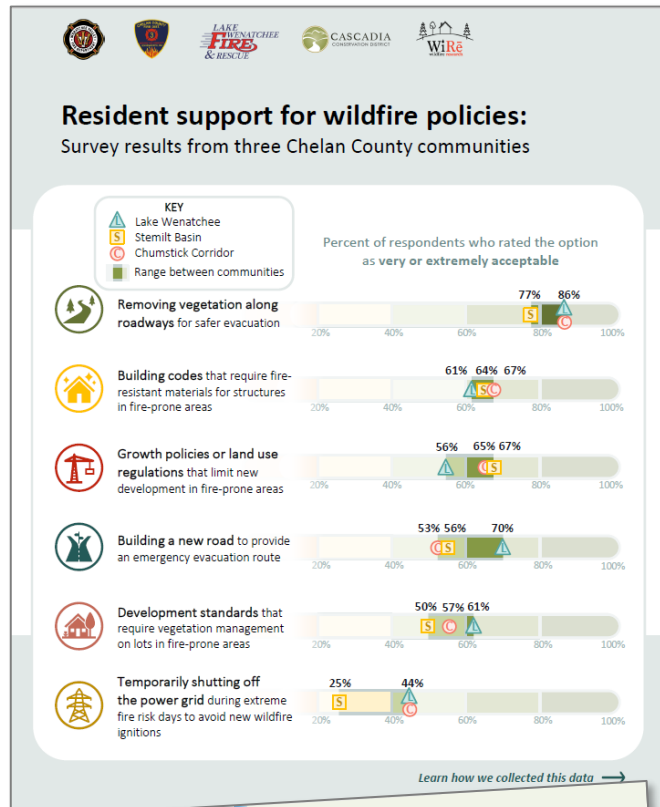
In May, WiRē traveled to Eastern Washington to present findings from three studies in Chelan County, WA: **Stemilt Basin, Lake Wenatchee, and Chumstick Corridor**. After giving separate, tailored presentations to our partners at the Wenatchee Valley Fire Department, Lake Wenatchee Fire & Rescue, Chelan County Fire District 3, and Cascadia Conservation District, we also brought all our partners together for a round-table discussion of wildfire mitigation and preparedness across the county. This discussion prompted WiRē to create a policy-maker oriented handout describing acceptability of wildfire-related policies. Furthermore, WiRē partner Patrick Haggerty from Cascadia Conservation District presented our project to the Chief of the U.S. Forest Service. Lastly, we presented results to the North Central Washington Forest Health Collaborative, sparking a new project in the Methow Valley in 2024.



WiRē partners from Wenatchee Valley Fire Department, Lake Wenatchee Fire & Rescue, Chelan County Fire District 3, and Cascadia Conservation District gathered with WiRē to discuss project results and next steps in May 2023.



WiRē presented to the North Central Washington Forest Health Collaborative in Okanogan County, WA in May 2023.



Top: Handout made for all Chelan County, Washington partners to share with policymakers.

Bottom: Handout made for Patrick Haggerty, Cascadia Conservation District, during visit from U.S. Forest Service Chief Randy Moore in May 2023.

2023 in Review

Outcomes

We expanded the existing dataset that compiles the paired rapid risk and social data across all partner projects.



26,358

**Risk
Assessments**



8,153

**Paired Social
Surveys**



23

Partner Projects



**WiRē earned the
Rocky Mountain
Research Station's
Award for Science
Delivery**

2023 in Review

Outcomes

We helped partners incorporate social science into their decision making through our publications.

Data Reports

Emigration Canyon, Utah

Goolsby, J.B., Brenkert-Smith, H., Reid, D., Meldrum, J.R., Champ, P.A., Barth, C.M., Donovan, C., Wagner, C. 2023. Living With Wildfire in Emigration Canyon, Utah: 2022 data report. Res. Note RMRS-RN-98. Fort Collins, CO: U.S. Department of Agriculture, Forest Service, Rocky Mountain Research Station. 143 p.
<https://doi.org/10.2737/RMRS-RN-98>.

Genesee, Colorado

Brenkert-Smith, H.; Dalton, D.; Puffett, J.; Champ, P.A.; Barth, C.M.; Meldrum, J.R.; Donovan, C.; Wagner, C.; Goolsby, J.B.; Forrester, C. 2023. Living with Wildfire in Genesee Fire Protection District, Jefferson County, Colorado: 2022 Data Report. Res. Note RMRS-RN-99. Fort Collins, CO: U.S. Department of Agriculture, Forest Service, Rocky Mountain Research Station. 123 p.
<https://doi.org/10.2737/RMRS-RN-99>.

Park County, Colorado

Brenkert-Smith, H., Champ, P.A., McConnell, A.E., Gomez, J., Barth, C.M., Meldrum, J.R., Donovan, C., Wagner, C., Goolsby, J.B. Living with Wildfire in Park County, Colorado: 2021 data report. Res. Note RMRS-RN-97. Fort Collins, CO: U.S. Department of Agriculture, Forest Service, Rocky Mountain Research Station. 123 p.
<https://doi.org/10.2737/RMRS-RN-97>.

Peer-Reviewed Publications

Brenkert-Smith, H., Goolsby, J.B., Champ, P.A., Meldrum, J.R., Donovan, C., Wagner, C., Barth, C.M., Forrester, C., Wittenbrink, S. 2023. The devil is in the details: Variation in public acceptance of fuels treatments across western fire-prone communities. *Western Economics Forum*, 21(2) 5-23. <http://dx.doi.org/10.22004/ag.econ.339190>

Meldrum, J.R., Champ, P.A., Brenkert-Smith, H., Barth, C.M., McConnell, A.E., Wagner, C., Donovan, C. 2024. Rethinking cost-share programs in consideration of economic equity: A case study of wildfire risk mitigation assistance for private landowners. *Ecological Economics*, 216: 108041.
<https://doi.org/10.1016/j.ecolecon.2023.108041>

2023 in Review

Outcomes

We raised wildfire risk awareness through webinars and presentations for diverse audiences.

Meldrum, J.R. (Jan 2023) **“The WiRē Team: putting people at the center of wildfire solutions.”** Colorado Forest Restoration Institute (CFRI) FireLab Speaker Series. Fort Collins, CO.

Public Radio for the Central Kenai Peninsula. (Mar 2023) **“Fire mitigation study will examine rural peninsula communities.”** Radio.
<https://www.kdill.org/local-news/2023-03-06/fire-mitigation-study-will-examine-rural-peninsula-communities>.

Meldrum, J.R. (Mar 2023) **“How an evidence-based approach to community-focused wildfire education programs can put people at the center of wildfire solutions .”** USDA Missoula Fire Science Laboratory Seminar Series. Virtual.
<https://www.firelab.org/event/1133>.

Meldrum, J.R., Forrester, C. (Mar 2023) **“City of Santa Fe Fire Department + WiRē: Community Preparedness for Wildfire.”** Ready, Set, Go Wildfire Preparedness Workshop - Greater Santa Fe Fireshed Coalition. Santa Fe, NM.
<http://www.santafefireshed.org/eventscalendar/2023/3/18/ready-set-go-wildfire-preparedness-workshop>.

Dimke, C. (Mar 2023) **“Connecting wildfire risk decisions between residential parcel and community scales .”** American Association of Geographers (AAG) Annual Meeting. Denver, CO.

Meldrum, J.R. (Apr 2023) **“Potential equity implications of cost-share programs for wildfire risk mitigation: evidence from surveys.”** USGS Fort Collins Science Center Seminar Series. Fort Collins, CO.

Meldrum, J.R. (Apr 2023) **“The WiRē Team: Long-running social science to support wildfire risk mitigation in the WUI .”** USGS Rocky Mountain Region Monthly Science Seminar series. Virtual.

Brenkert-Smith, H., Meldrum, J.R. (Apr 2023) **“Survey evidence on potential equity implications of cost-share programs.”** Colorado Wildland Fire Conference. Fort Collins, CO.
<https://fireadaptedco.org/2023-keynotes-speakers/>.

Forrester, C., Meldrum, J.R., Dalton, D., Formeller, W., Johnson, A., Trimarco, W. (Apr 2023) **“Connecting practitioners with shared concerns through the Wildfire Research (WiRē) Community of Practice (CoP).”** Colorado Wildland Fire Conference. Fort Collins, CO.
<https://fireadaptedco.org/2023-keynotes-speakers/>.

Meldrum, J.R. (Apr 2023) **“Communities are made of people and homes: Putting people into solutions to wildfire risk to communities.”** USGS Fire Science Community of Practice webinar. Virtual.

Champ, P.A., Gomez, J. (Jun 2023) **“The Wildfire Research (WiRē) Approach: Actionable Social Science to Support Evidence-Based Wildfire Education Programs.”** USDA Forest Service, Rocky Mountain Research Station Congressional Virtual Briefing. Virtual.

Meldrum, J.R. (Jul 2023) **“Living with Wildfire in Grand County: Study Recap and Recent Activity.”** Grand County Wildfire Council Steering Committee Meeting. Granby, CO.

2023 in Review

Outcomes

We raised wildfire risk awareness through webinars and presentations for diverse audiences.

Champ, P.A. (Sep 2023) **“Lessons from the Wildfire Research (WiRē) Team to inform Community Engagement.”** Community Wildfire Mitigation Best Practices Training. Virtual.

Champ, P.A. (Oct 2023) **“The Wildfire Research Team and Community Engagement.”** USDA Forest Service National Communications Directors Field Trip. Fort Collins, CO.

Champ, P.A. (Oct 2023) **“Wildfire Research (WiRē): Using social data to foster community engagement in high risk firesheds.”** USDA Forest Service Fire Science Research Community. Virtual.

Meldrum, J.R. (Oct 2023) **“Insights about wildfire communication and education from WiRē.”** National Wildfire Coordinating Group (NWCG) Communication, Education, and Prevention Committee (CEPC) Annual Face-to-Face Meeting . Fort Collins, CO.
<https://www.nwcg.gov/committees/communication-education-and-prevention-committee>

2023 in Review

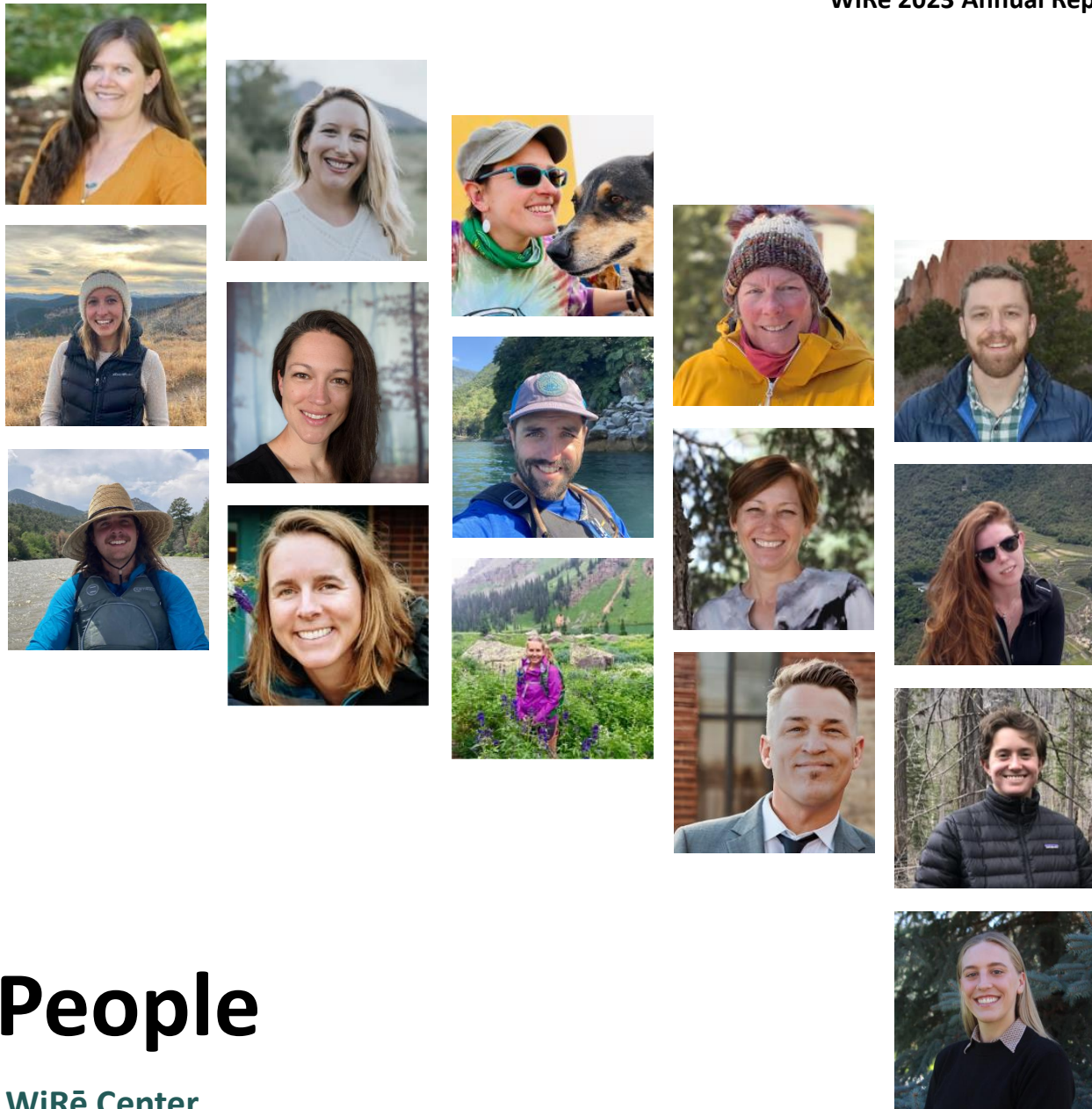
Financials

Net income

\$486,097

Net expenses

\$455,902



People

WiRē Center

Colleen Donovan, Project Manager
Chiara Forrester, Wildfire Mitigation Specialist
Josh Kuehn, Wildfire Mitigation Specialist
Carolyn Wagner, Data Manager
Suzanne Wittenbrink, Program Associate

WiRē Center Board of Directors

Hannah Brenkert-Smith, University of Colorado Boulder
Dana Coelho, Urban & Community Forestry Program Manager, Colorado State Forest Service
Jamie Gomez, West Region Wildfire Council
Lilia Falk, West Region Wildfire Council
Hollis Hope, Leadership and organizational mentor and coach

Advisory Committee

Patricia Champ, USDA Forest Service
Christopher Barth, U.S. Bureau of Land Management
James Meldrum, U.S. Geological Survey

Current Affiliate Contributors

Christine Dimke, Colorado State University
Julia Goolsby, University of Colorado Boulder
Kelly Wallace, University of Colorado Boulder

Meet Our New Staff

We welcomed three new members to our team!



Josh Kuehn – Wildfire Mitigation Specialist

Josh has experience designing and implementing forest restoration projects tailored toward wildfire resilience and has worked directly with landowners to develop defensible space and home hardening plans. Additionally, Josh has partnered with local fire protection districts to administer slash removal programs for WUI homeowners and has participated in Community Wildfire Protection Plan (CWPP) development. Josh holds BA degrees in Geography and Sustainability from Jacksonville University and an MS in Conservation Leadership from Colorado State University.



Suzanne Wittenbrink – Program Associate

Suzanne works with the WiRē Center team to analyze and process data and build products for WiRē's partners. Her professional goal is to be part of solutions at the public-natural resource interface and WiRē is at the forefront of those solutions. Suzanne holds a degree in Environmental and Natural Resource Economics from Colorado State University with a minor in Global Environmental Sustainability.



Kelly Wallace

Kelly Wallace is a research associate at the University of Colorado Boulder's Institute of Behavioral Science. At WiRē, Kelly focuses on WUI homeowners' attitudes toward wildfire mitigation and risk. Her main research interests include non-market valuation, outdoor recreation, and the multiple uses of public lands. Prior to working with WiRē, Kelly was an economist at the U.S. Geological Survey. Kelly has an MS in Agricultural and Resource Economics and a BA in Economics, both from Colorado State University.

Affiliate Organizations



University of Colorado



USDA Forest Service



U.S. Geological Survey



**U.S. Bureau of Land
Management**

Funding Sources

None of our projects would be possible without the engagement and support of our partners. These organizations that range from fire protection districts, to wildfire councils, to state agencies bring their earnest passion and commitment to wildfire risk reduction to the table for each project. They also bring critical support by covering personnel for field data collection and costs of survey administration.

Individual WiRē Team members maintain a connection with the WiRē Center by participating on the Center's Advisory Committee or as a member of the Board of Directors. In this capacity, the WiRē Team provides technical and strategic guidance to the WiRē Center, ensuring the WiRē approach is implemented with exceptional quality and scientific integrity. The WiRē Center relies on the continued technical and research support from individual Team members, as well as in-kind support (salary and travel) from their respective employers – USDA Forest Service (FS), U.S. Geological Survey (USGS), Bureau of Land Management (BLM), West Region Wildfire Council, and the University of Colorado at Boulder.

Additional support from the University of Colorado *Natural Hazards Center* Mitigation Matters Research Program Grant and *Institute of Behavioral Science* Small Grants Program, which funded the Jackson and Ashland interviews and the online study to support the Ashland field experiment.

FY 2023 Funding Sources



USDA Forest Service

State and Private Forestry Fire and Aviation Management



Bureau of Land Management

Fuels Management and Community Fire Assistance Program

Leveraged Funding



National Science Foundation

Grant SES-1823509



University of Colorado

Outreach Grant Program



Natural Hazards Center, University of Colorado

FEMA Quick Response Research Award

